



**PRESIDENTIAL  
YOUTH  
EMPLOYMENT  
INTERVENTION**

**Working together to  
realise the potential  
of young people**

**AN OVERVIEW OF PYEI PARTNERS**



**THE PRESIDENCY  
REPUBLIC OF SOUTH AFRICA**



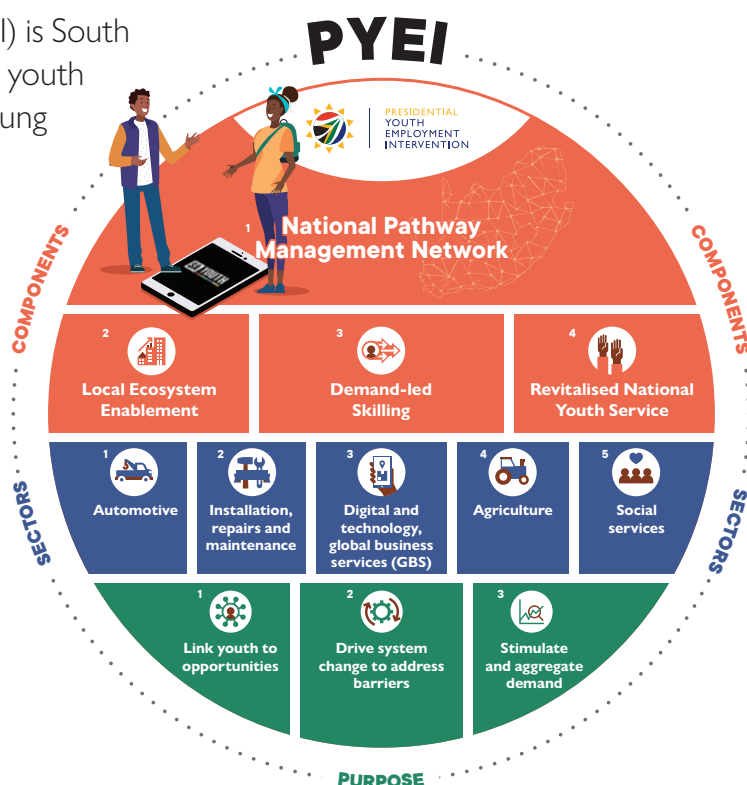
# About the Presidential Youth Employment Intervention

The Presidential Youth Employment Intervention (PYEI) is South Africa's most comprehensive effort yet to address the youth unemployment crisis. Its goal is to transition more young people from learning to earning.

The intervention brings together the strengths of numerous government institutions and social partners to deliver more opportunities for young people. It seeks to coordinate, accelerate and enhance existing programmes and unblocks pathways to employment, learning and youth enterprise.

A central component of the PYEI is the establishment of a National Pathway Management Network (NPMN) that guides young people towards opportunities. Other components include a focus on Demand-led Skilling; Local Ecosystem Enablement to facilitate self-employment and enterprise; and a Revitalised National Youth Service (NYS).

Activities focus on growth areas with earning potential for young people. These are: digital, technology and global business services; agriculture; installation repairs and maintenance; social services; and the automotive sector. A Project Management Office (PMO) in the Presidency coordinates the PYEI. Government departments with key roles in employment creation and youth development implement the intervention.



## The PYEI Partnership Approach

A strong partnership and coordination approach is central to the delivery of the Presidential Youth Employment Intervention (PYEI). The Project Management Office (PMO) in the Presidency provides overall coordination, strategic direction, and political leadership.

To support overall coordination and project management, the PMO is supported by partners such as the German Cooperation through the Deutsche Gesellschaft für Internationale Zusammenarbeit (GIZ) and the World Bank.

Key government departments lead the implementation, together with other relevant partner organisations from the public sectors and beyond. The PYEI has established coordination mechanisms to improve alignment and deliver greater impact with existing resources. The PYEI is working continuously to engage partners that create more opportunities for young people. The list of partners mentioned in this document represents a snapshot of partners engaged through the PYEI at time of publication and is subject to dynamic change.





# National Pathway Management Network Partners

The Department of Employment and Labour (DEL) in partnership with the Government Technical Advisory Centre (GTAC) and the Jobs Fund leads the work on the **National Pathway Management Network (NPMN)**. The NPMN aggregates and consolidates service offerings for young people in one place. A coordinating committee has been established to facilitate implementation within government. A technical committee brings together government and non-government partners to develop mechanisms to share opportunities and ensure visibility of young people across the network. Additionally, development partners support pilot projects of the NPMN.

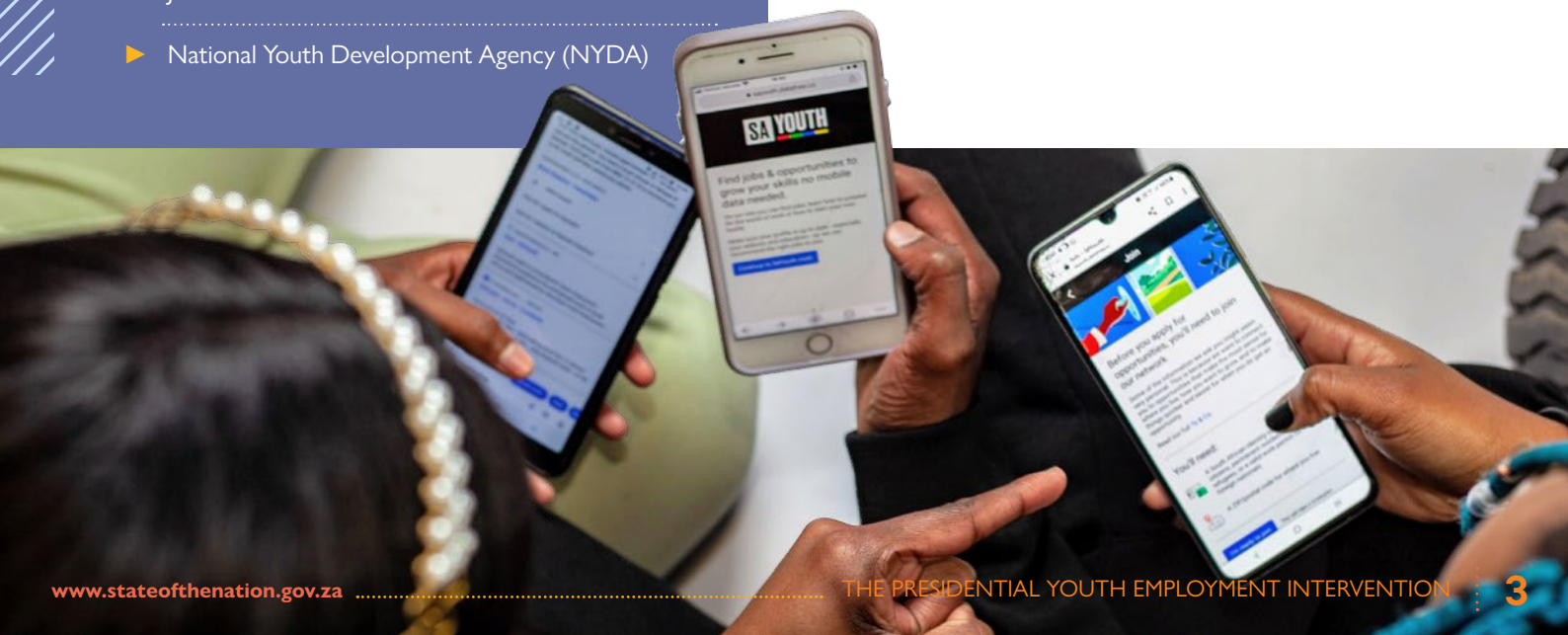
**Current partners in the NPMN are listed below:**

## GOVERNMENT

- ▶ Council for Scientific and Industrial Research (CSIR)
- ▶ Department of Higher Education and Training (DHET)
- ▶ Department of Communications and Digital Technologies (DCDT)
- ▶ Department of Employment and Labour (DEL)
- ▶ Department of Public Works and Infrastructure (DPWI)
- ▶ Department of Science and Innovation (DSI)
- ▶ Department of Small Business Development (DSBD)
- ▶ Department of Trade, Industry and Competition (the dtic)
- ▶ Department of Women, Youth and Persons with Disabilities (DWYPD)
- ▶ Gauteng provincial government (Tshepo 1 million)
- ▶ Government Technical Advisory Centre (GTAC)
- ▶ Jobs Fund
- ▶ National Youth Development Agency (NYDA)

## NON-GOVERNMENT

- ▶ Agence Française de Développement (AFD)
- ▶ Confederation of Associations in the Private Employment Sector (CAPES)
- ▶ DG Murray Trust (DGMT)
- ▶ European Union (EU)
- ▶ Harambee Youth Employment Accelerator
- ▶ mLAB Southern Africa
- ▶ National Business Initiative (NBI)
- ▶ Southern Africa Labour and Development Research Unit (SALDRU) and University of Johannesburg with partners
- ▶ United Nations Children's Fund (UNICEF)
- ▶ World Bank
- ▶ Youth Employment Service (YES)
- ▶ Youth Explorer



# Partners Supporting Demand-led Skilling

The PYEI's Demand-led Skilling component is led by the DHET in partnership with the National Skills Fund and the Sector Education and Training Authorities (SETAs). In addition, the Michael and Susan Dell Foundation (MSDF), the Foreign, Commonwealth and Development Office at the British High Commission (FCDO) and the German Cooperation through GIZ are supporting activities in this component, such as the piloting of a pay-for-performance mechanisms or the implementation of Demand-led Skilling workstreams in all the priority growth areas of the PYEI. The Demand-led Skilling workstreams bring together labour supply and demand-side actors to identify skills needs and design responsive interventions to address them.

## Infrastructure (with focus on installation, repairs and maintenance for PYEI)

### GOVERNMENT

- ▶ Council for the Build Environment (CBE)
- ▶ Construction Industry Development Board (CIDB)
- ▶ Department of Public Works and Infrastructure (DPWI)

### NON-GOVERNMENT

- ▶ Afrifocus Securities
- ▶ Arctic Consulting
- ▶ Growthpoint Properties
- ▶ National Business Initiative (NBI)
- ▶ Redefine Properties
- ▶ South African Property Owners Association (SAPOA)
- ▶ Strategic Procurement Services
- ▶ Swiss Economic Cooperation and Development (SECO)
- ▶ Trade & Industrial Policy Strategies (TIPS)



# Partners Supporting Demand-led Skilling

## Agriculture

### GOVERNMENT

- ▶ Agricultural Research Council (ARC)
- ▶ Department of Forestry, Fisheries and the Environment (DFFE)
- ▶ Department of Agriculture, Land Reform and Rural Development (DALRRD)
- ▶ Department of Trade, Industry and Competition (the dtic)
- ▶ Food & Beverages Manufacturing SETA
- ▶ Health & Welfare SETA

### NON-GOVERNMENT

- ▶ AgriSA
- ▶ Berries SA
- ▶ Business Unity South Africa (BUSA)
- ▶ Citrus Academy
- ▶ Public Private Growth Initiative
- ▶ Forestry SA
- ▶ Harambee Youth Employment Accelerator
- ▶ Labour Amplified





# Partners Supporting Demand-led Skilling

## Digital and ICT

### GOVERNMENT

- ▶ Bank SETA
- ▶ Department of Communications and Digital Technologies (DCDT)
- ▶ Department of Employment and Labour (DEL)
- ▶ Department of Higher Education and Training (DHET)
- ▶ Department of Science and Innovation (DSI)
- ▶ Department of Trade, Industry and Competition (the dtic)
- ▶ Financial & Accounting SETA
- ▶ Insurance SETA
- ▶ Media, Information and Communication Technologies SETA
- ▶ National Electronic Media Institute of South Africa (NEMISA)
- ▶ Quality Council for Trades and Occupations (QCTO)
- ▶ Services SETA

### NON-GOVERNMENT

- ▶ Business Process Enabling SA (BPESA)
- ▶ Digital Council
- ▶ German Cooperation/GIZ
- ▶ Harambee Youth Employment Accelerator
- ▶ Michael and Susan Dell Foundation (MSDF)
- ▶ Public Private Growth Initiative
- ▶ South Africa in the Digital Age
- ▶ TechXit
- ▶ Youth Employment Service (YES)



# Partners Supporting Demand-led Skilling

## Social Services

### GOVERNMENT

- ▶ Department of Basic Education (DBE)
- ▶ Department of Health (DoH)
- ▶ Department of Social Development (DSD)
- ▶ Health & Welfare SETA
- ▶ Education, Training and Development Practice SETA

### NON-GOVERNMENT

- ▶ Accenture
- ▶ Aurum Institute
- ▶ Broad Reach Health Care (BRHC)
- ▶ Campaign4Cancer
- ▶ Public Private Growth Initiative
- ▶ DG Murray Trust (DGMT)
- ▶ Foundation for Professional Development
- ▶ Grow Great
- ▶ Harambee Youth Employment Accelerator
- ▶ Hollard Trust
- ▶ Ilifa Labantwana
- ▶ Independent Community Pharmacy Association (ICPA)
- ▶ IQ Business
- ▶ National Financial Literacy
- ▶ Public Private Growth Initiative (PPGI)
- ▶ Right to Care
- ▶ SmartStart
- ▶ The Aurum Institute
- ▶ The Clothing Bank
- ▶ Youth Employment Service (YES)



# Partners Supporting Demand-led Skilling

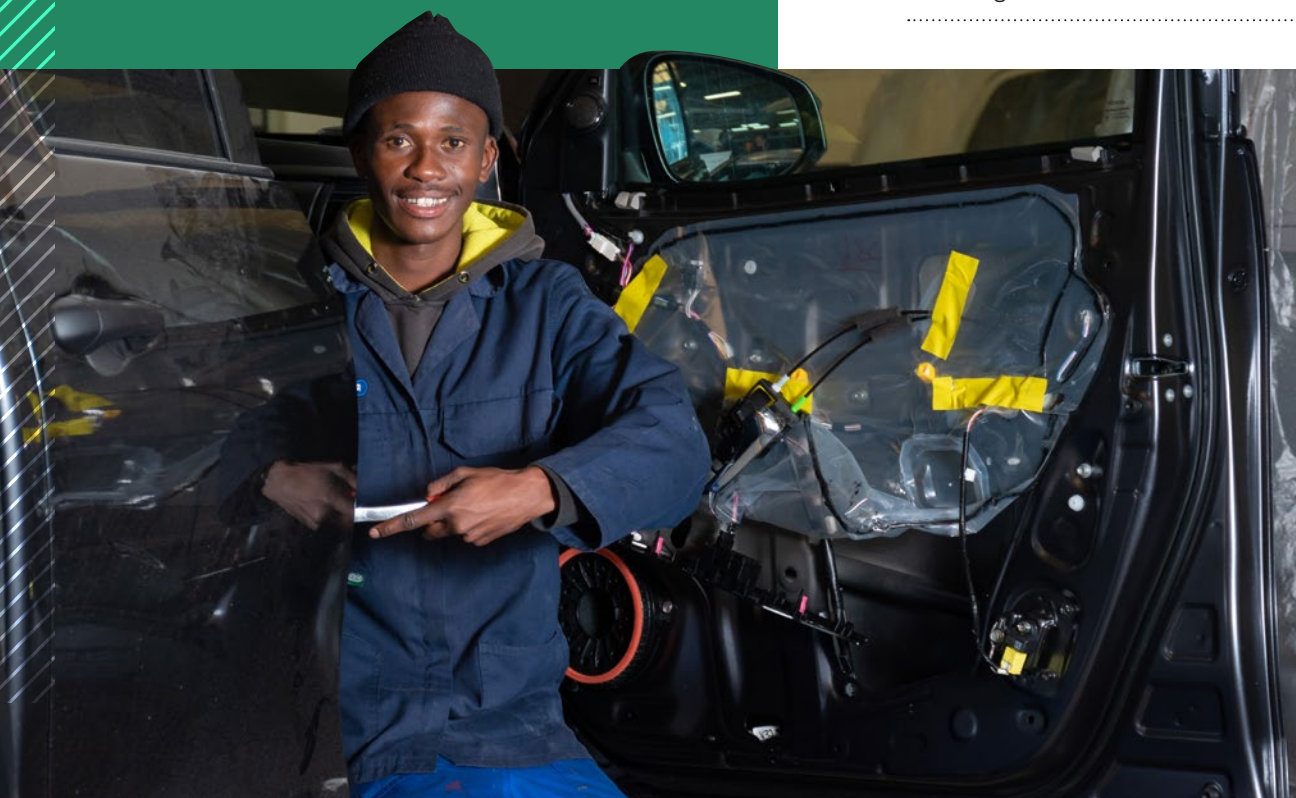
## Automotive

### GOVERNMENT

- ▶ Department of Higher Education and Training (DHET)
- ▶ Department of Trade, Industry and Competition (the dtic)
- ▶ Manufacturing, Engineering and Related Services SETA

### NON-GOVERNMENT

- ▶ Automotive Industry Development Centre (AIDC) Eastern Cape
- ▶ Automotive Industry Development Centre (AIDC) Gauteng
- ▶ Bosch
- ▶ Isuzu SA
- ▶ National Association of Automotive Component and Allied Manufacturers (NAACAM)
- ▶ National Association of Automobile Manufacturers (NAAMSA)
- ▶ National Union of Metalworkers (NUMSA)
- ▶ Volkswagen SA





# Local Ecosystem Enablement Partners

The PYEI is contributing to creating enabling ecosystems for small, micro and medium enterprises (SMMEs) to unlock their potential to create opportunities for young people. A coordinating committee ensures alignment strategies for local economic development in line with the District Development Model and a new fund will support aggregators and build institutional capacity in the ecosystem.

**The partners driving and supporting implementation are listed below:**

## GOVERNMENT

- ▶ Department of Cooperative Governance and Traditional Affairs (DCOGTA)
- ▶ Department of Small Business Development (DSBD)
- ▶ Department of Trade, Industry and Competition (the dtic)
- ▶ Department of Women, Youth and Persons with Disabilities (DWYPD)
- ▶ National Youth Development Agency (NYDA)
- ▶ Gauteng Economic Development
- ▶ Industrial Development Corporation (IDC)
- ▶ Jobs Fund
- ▶ KwaZulu-Natal Economic Development
- ▶ Small Enterprise Development Agency (SEDA)
- ▶ Small Enterprise Finance Agency (SEFA)
- ▶ Western Cape Economic Development

## NON-GOVERNMENT

- ▶ European Union (EU)
- ▶ German Cooperation/GIZ
- ▶ Michael and Susan Dell Foundation (MSDF)
- ▶ World Bank



# Revitalised National Youth Service Partners

The revitalized National Youth Service programme is nurturing civic responsibility and contributes to nation building. It also provides young people with workplace experience and builds their self-confidence and agency. This component of the PYEI is led by the Department of Women, Youth and Persons with Disabilities, through the National Youth Development Agency and in partnership with GTAC and the Jobs Fund. A steering committee is in place to coordinate and align with all existing youth service programmes.

**The partners driving and supporting implementation are listed below:**

## GOVERNMENT

- ▶ Department of Women, Youth and Persons with Disabilities (DWYPD)
- ▶ Department of Human Settlements (DHS)
- ▶ Department of Public Works and Infrastructure (DPWI)
- ▶ Department of Cooperative Governance and Traditional Affairs (DCOGTA)
- ▶ Department of Social Development (DSD)
- ▶ Department of Sports, Arts and Culture (DSAC)
- ▶ Department of Agriculture, Land Reform and Rural Development (DALRRD)
- ▶ Department of Higher Education and Training (DHET)
- ▶ Industrial Development Corporation (IDC)

## NON-GOVERNMENT

- ▶ South African Association of Youth Clubs
- ▶ Youth Build South Africa
- ▶ South African Youth Council
- ▶ Harambee Youth Employment Accelerator
- ▶ City Year



# Development Partners Contributing to the Objectives of the PYEI

The PYEI facilitates greater dialogue and exchange among development partners in the country to identify opportunities for cooperation and joint implementation. The PYEI reporting system collects data from all implementing organisations and partners, providing a clearer picture of collective reach and outputs across the PYEI partner universe.

**In addition to the partners listed above who are contributing directly to implementation, there is a wide range of development partners who contribute to the objectives of the PYEI through their own projects.**

## ADDITIONAL PARTNERS

- ▶ African Development Bank (AfDB)
- ▶ Allan Gray Orbis Foundation
- ▶ British Council
- ▶ Danish Industries
- ▶ Embassy of Finland
- ▶ Embassy of France
- ▶ Embassy of Ireland (Irish Aid)
- ▶ Embassy of Japan
- ▶ German Chamber of Commerce and Industry
- ▶ German Cooperation/Kreditanstalt für Wiederaufbau (KfW)
- ▶ Global Affairs Canada
- ▶ International Finance Corporation (IFC)
- ▶ International Labour Organisation (ILO)
- ▶ Japan International Cooperation Agency (JICA)
- ▶ New Development Bank (NDB)
- ▶ United Nations Development Programme (UNDP)
- ▶ United States Agency for International Development (USAID)

